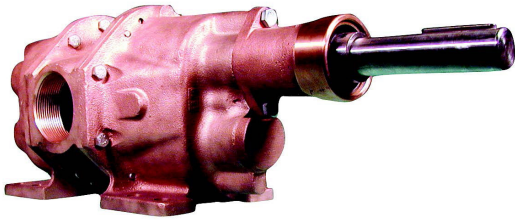




OBERDORFER®

An Ingersoll Rand Business

N26HD Series Bronze Pedestal Rotary Gear Pumps



Features

- 2" NPT Ports
- Temp. Range: -40°F - 400°F
- All Bronze Castings and Stainless Steel Shafts
- Sealing Arrangement Interchangeable in Field with Proper Kit
- Outboard Ball Bearing Support for Belt Drive Applications
- Self Lubricating Carbon Bearings

Service Wear Factors

Speed - High speed accelerates wear. For longer service life keep speed as low as possible. Pump speeds above 900 RPM not recommended except for intermittent duty and pressures below 7 bar.

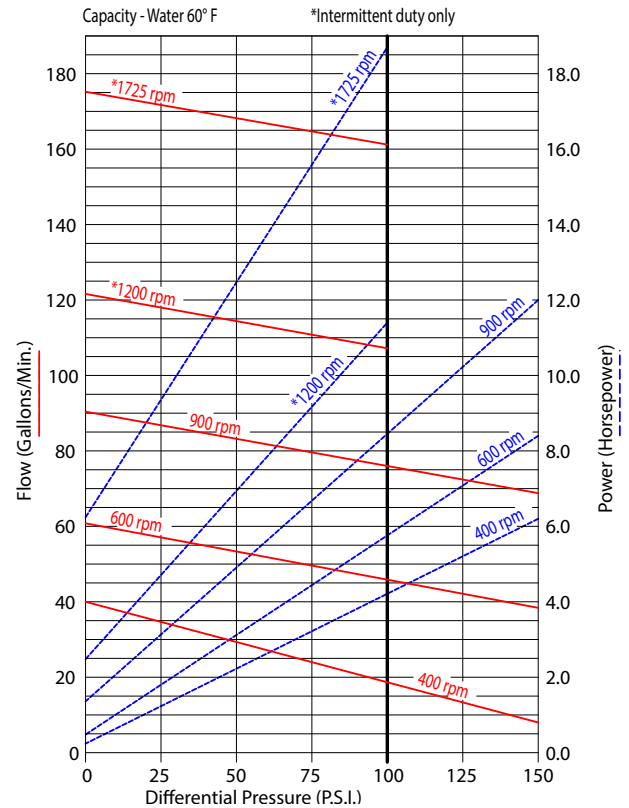
Pressure - High pressure accelerates wear. For longer service life keep pressure as low as possible.

Liquid Temperature - High temperature accelerates wear. Keep as close to room temperature as possible.

Liquid Contamination - Impurities like fine abrasive silt or sand accelerate wear. Keep liquid as clean as possible.

Liquid Lubricity - Lubricants increase service life many fold. Use lubricant additives whenever possible.

Performance



Noise - Large gear pumps are inherently noisy due to metal to metal gear contact. Make installations far removed from office or other relatively quiet people areas. Some noise reduction can be realized by lowering pump speed and use of isolation mounts and lines, usually the small amount of noise reduction achieved does not justify the effort and expense.

Drive & Alignment - Direct drive is the recommended drive arrangement. This pump is suitable for belt drive applications without needing pillow block bearings to achieve acceptable pump life. Correct alignment is absolutely essential for satisfactory pump life. Recheck alignment after piping has been connected to the pump.

IMPORTANT: Before attempting to remove a seal housing containing seal components by sliding them off the pump shaft, be sure to unlock 2 set screws locking the ball bearing inner race to the pump shaft. The ball bearing is identified as item 20. Also, before attempting to slide the seal housing from the pump shaft, remove all burrs, scale, and projections that could be formed by fretting corrosion.



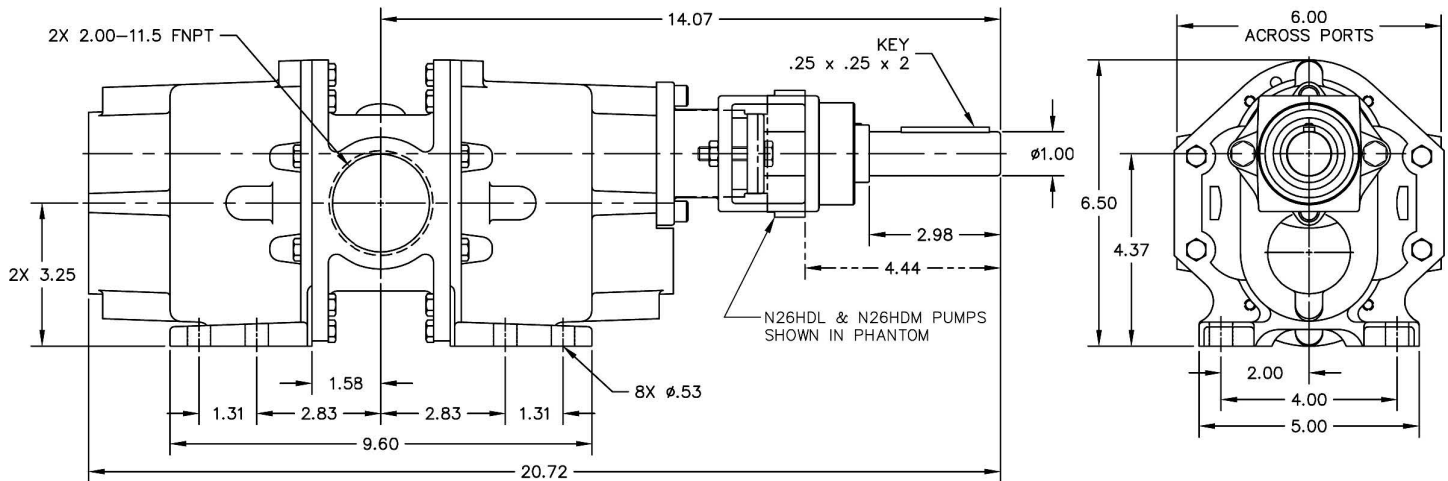
OBERDORFER®

An Ingersoll Rand Business

Seal Conversion Kits

Seal conversion kits illustrated (on back) are designed for quick removal and replacement. In each case, seal housings are fastened to pump bodies by means of 2 bolts, item 13.

Dimensions



Seal Conver. Kit No.	Pump Models	Seal Type	Materials
OB11021	OBN26HDP	Packing	Acrylic-Graphite
OB11023	OBN26HDL	Lip	FKM-PTFE
OB11024	OBN26HDL S03	Lip	NBR
OB11025	OBN26HDM	Mechanical	NBR-Ceramic
OB11026	OBN26HDMS07	Mechanical	FKM-Ceramic
TBD	OBN26HDMS8	Mechanical	EPDM



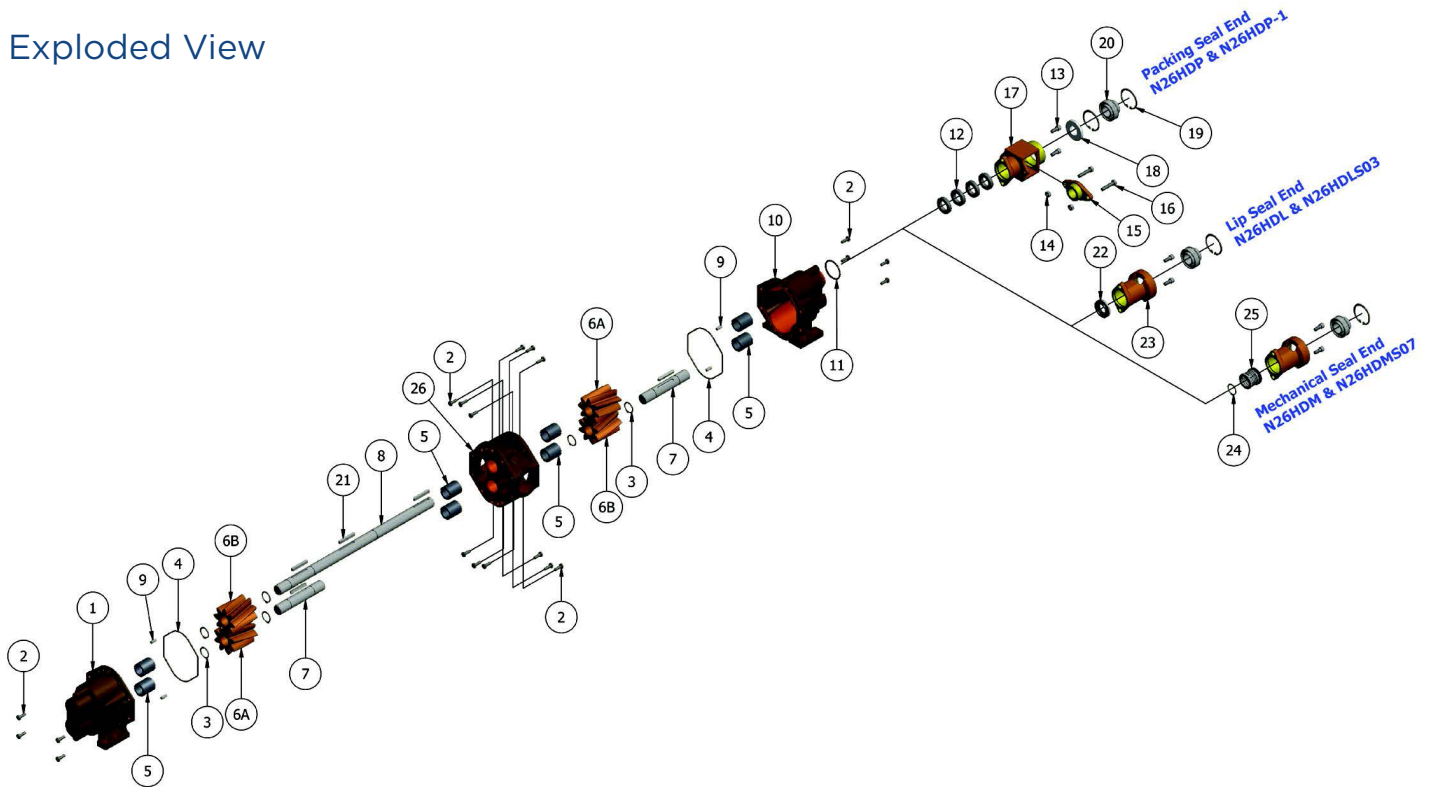
12500 South Pulaski Road
Alsip, IL 60803, USA
Phone (800) 448.1668



OBERDORFER®

An Ingersoll Rand Business

Exploded View



	1	2	3	4	5	6a	6b	7	8	9	10	11	12	13
	Body Rear	Screw	Snap Ring	O-Ring	Bearing	Drive Gear	Idle Gear	Idle Shaft	Drive Shaft	Dowel Pin	Body Front	O-Ring	Packing Ring	Screw
Model	Qty. 1	Qty. 20	Qty. 6	Qty. 2	Qty. 8	Qty. 2	Qty. 2	Qty. 2	Qty. 1	Qty. 4	Qty. 1	Qty. 1	Qty. 4	Qty. 2
OBN26HDP	OB5220PN5N	OB5694	OB7651	OB9797-158	OB5108	OB9854	OB9855	OB7653	OB7571	OB8597	OB5220PN7N	OB6515	OB7624	OB6827
OBN26HDL	OB5220PN5N	OB5694	OB7651	OB9797-158	OB5108	OB9854	OB9855	OB7653	OB7571	OB8597	OB5220PN7N	OB9797-224	N/A	OB6827
OBN26HDL53	OB5220PN5N	OB5694	OB7651	OB9797-158	OB5108	OB9854	OB9855	OB7653	OB7571	OB8597	OB5220PN7N	OB6515	N/A	OB6827
OBN26HDM	OB5220PN5N	OB5694	OB7651	OB9797-158	OB5108	OB9854	OB9855	OB7653	OB7571	OB8597	OB5220PN7N	OB6515	N/A	OB6827
OBN26HDM57	OB5220PN5N	OB5694	OB7651	OB9797-158	OB5108	OB9854	OB9855	OB7653	OB7571	OB8597	OB5220PN7N	OB9797-224	N/A	OB6827
OBN26HDM58	OB5220PN5N	OB5694	OB7651	OB9999-158	OB5108	OB9854	OB9855	OB7653	OB7571	OB8597	OB5220PN7N	OB6515	N/A	OB6827

	14	15	16	17	18	19	20	21	22	23	24	25	26*	27	Repair Kit
	Nut	Gland	Screw	Seal Housing	Seal	Snap Ring	Ball Bearing	Key	Lip Seal	Seal Housing	Ring	Seal Assy	Tie Block	Tag	
Model	Qty. 2	Qty. 1	Qty. 2	Qty. 1	Qty. 1	Qty. 1 or 2	Qty. 1	Qty. 5	Qty. 1	Qty. 1	Qty. 1	Qty. 1	Qty. 1	Qty. 1	
OBN26HDP	OB8395	OB7451	OB9905	OB7449	OB6710	OB7372 (2 Req'd)	OB7368	OB5975	N/A	N/A	N/A	N/A	OB2286	OB7737	OB11015
OBN26HDL	N/A	N/A	N/A	N/A	N/A	OB7372 (1 Req'd)	OB7368	OB5975	OB7262	OB7365	N/A	N/A	OB2286	OB7737	OB11017
OBN26HDL53	N/A	N/A	N/A	N/A	N/A	OB7372 (1 Req'd)	OB7368	OB5975	OB6500	OB7365	N/A	N/A	OB2286	OB7737	OB11018
OBN26HDM	N/A	N/A	N/A	N/A	N/A	OB7372 (1 Req'd)	OB7368	OB5975	N/A	OB7365	OB7651	OB32315	OB2286	OB7737	OB11019
OBN26HDM57	N/A	N/A	N/A	N/A	N/A	OB7372 (1 Req'd)	OB7368	OB5975	N/A	OB7365	OB7651	OB32372	OB2286	OB7737	OB11020
OBN26HDM58	N/A	N/A	N/A	N/A	N/A	OB7372 (1 Req'd)	OB7368	OB5975	N/A	OB7365	OB7651	OB33335	OB2286	OB7737	TBD

Repair Kits contain items 3, 4, 5, 6, 7, 8, 11, 12, 18, 22, 24 & 25.
Item 27 not depicted.

* The sub-assembly part no. for the Tie Block with (4) OB5108 bearings (item 5) installed is OB32129.

IR Ingersoll Rand

12500 South Pulaski Road
Alsip, IL 60803, USA
Phone (800) 448.1668